



H A Z E L N U T

— Farm —



A Louisville Wedding & Event Venue

*Where Kentucky Charm
Meets Ballroom Elegance*

2026 - 2027

INFORMATION BROCHURE

Welcome to Hazelnut Farm

Your wedding day should unfold as effortlessly as it feels magical. At Hazelnut Farm, we make that possible with a full-day, all-in-one experience — from the moment you arrive at 8:00 am to get ready, to your final dance under the glow of our crystal chandeliers at midnight.

"Hazelnut Farm gave us the space and support to create something that felt so authentically us — it was like stepping into a dream."

— Jessica & Matt

Tucked away on 40 private acres just minutes from Louisville, Hazelnut Farm is where countryside charm meets refined elegance. Whether you're envisioning a romantic garden ceremony, a black-tie ballroom celebration, or something in between, our venue adapts beautifully to your vision.

As a family-owned business, we believe your experience should feel personal, supported, and thoughtfully curated. Our team is here from day one — not just to host your wedding, but to help you bring it to life.



Porchia Nicole Photography

You're one step closer to the celebration of your dreams.
Let's bring it to life.



Setting the Scene: A Private. Elegant Escape

From the moment your guests arrive at Hazelnut Farm, they'll feel it – the calm of open space, the hush of trees and gardens, and the warmth of a space that feels entirely your own.

Our 40-acre property offers the kind of natural beauty and privacy that's hard to find this close to the city. Just five minutes off the Gene Snyder Expressway and right next to Valhalla Golf Club, Hazelnut Farm is easy to get to – and yet feels a world away.

Whether your vision includes soft garden paths, elegant waterfront portraits, or a ceremony under the open sky, you'll find the perfect setting here:

- A 100-foot covered porch overlooking a private lake
- The Monet-inspired bridge to our island ceremony space
- A koi fish dock and an Italian-style patio
- Historic architectural features like the preserved smokehouse
- Fully paved, ADA-compliant access throughout

We've designed the grounds to make your event feel effortless – with wide walkways for strollers and wheelchairs, gentle lighting for evening transitions, and scenic spots at every turn.

Your perfect setting is already here —
let's make it yours.

Katie McBroom Photo + Films

"Our guests kept asking how we found this hidden gem. It felt peaceful, magical, and completely ours for the day."

— Rachel & Ben

Investment & Availability

2026 - 2027

JANUARY - FEBRUARY

Friday: \$9000
Saturday: \$9500
Sunday: \$8500

MARCH & DECEMBER

Friday: \$10,000
Saturday: \$11,000
Sunday: \$9500

APRIL & NOVEMBER

Friday: \$11,000
Saturday: \$12,000
Sunday: \$10,500

JULY - AUGUST

Friday: \$11,750
Saturday: \$12,750
Sunday: \$11,250

MAY - JUNE & SEPTEMBER - OCTOBER

Friday: \$13,250
Saturday: \$14,250
Sunday: \$12,750

WEEKDAYS

\$4500

*partial day & under 100 guests
for corporate only*

\$7500

*full day - weddings under 100 or
corporate over 100 guests*

\$8500

full day - weddings over 100

HOLIDAY WEEKENDS

*Sunday before Labor Day & Memorial Day
Independence Day Weekend
Thanksgiving Friday
Christmas & Christmas Eve
New Year's Eve & Day*

Subject to specialty pricing

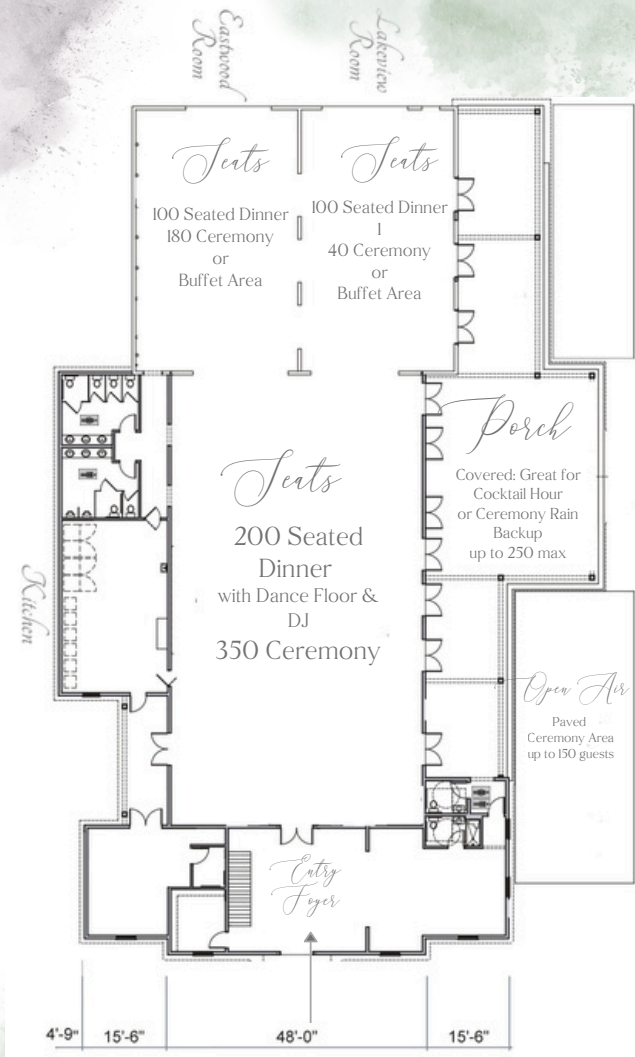
Horse Rental

**January - April &
November-December**
\$5750/night

May - October
\$6250/night

Prices above for 2 night minimum.
Add \$500 for single night rental with late checkout when available

LAYOUT & CAPACITY



EFFORTS HAZELNUT FARM IS MAKING TO REDUCE OUR IMPACT

Keeping Kentucky Beautiful

Weddings can be joyful without being wasteful. We're always working to reduce our footprint.

We know that how a space operates matters — not just how it looks. That's why we've taken intentional steps to make Hazelnut Farm more environmentally conscious, season after season.

Our Current Efforts:

- Irrigation sourced from our private lake and holding ponds
- (We use natural water collection instead of municipal water for our gardens.)
- Low-energy hand dryers and refillable bath amenities in restrooms and the Farmhouse
- Non-disposable dinnerware required for events (with limited exceptions)
- Natural and eco-conscious landscaping and cleaning products used whenever possible
- Recycling and waste reduction practices in coordination with caterers and planners



CONTINUING A KENTUCKY TRADITION

Good luck for good weather

Have you heard the tried-and-true Kentucky method to encourage the best possible weather on your wedding day? The legend is you bury a bottle of bourbon upside down at the location you will exchange vows on a day with your desired wedding day weather. We will let you find a corner of the farm to bury your very own bottle. When rain stays away on your wedding day you can dig it up and enjoy a toast from your lucky bottle after the ceremony. Keep your bottle as a souvenir of your perfect Hazelnut Farm wedding day!



Photos by: Erin Trimble Photography



Everyone Belongs Here

A wedding should reflect the people at the center of it, and we're here to support that.

From the start, Hazelnut Farm has been a space where every couple, family, and guest is welcomed with open arms. We're proud to support love in all its forms, and we hold a deep commitment to inclusion and respect across all backgrounds, identities, and faith traditions.

We believe that:

- Love is love. Every couple deserves to feel safe, celebrated, and seen.
- All faiths and ceremonies are welcome. Whether your wedding includes religious tradition, cultural rituals, or something all your own, we honor your story.
- Diversity makes us better. Our team is committed to upholding a standard of service that is respectful, inclusive, and responsive to the needs of all communities.
- Accessibility matters. Our venue is fully ADA-compliant, with paved pathways, climate-controlled interiors, and thoughtful accommodations.



YOUR DAY: SEAMLESS FROM START TO FINISH

Hours of Rental

- Arrive as early as 8:00 am to get ready in the dressing suites or allow vendors access for drop-off and setup. Tables & chairs will be in place by the time doors open!
- Music can end as late as midnight. Your vendors are then given time to pack up and load out.
- Your rehearsal is included! While it can't be guaranteed to be the day before, you do get one hour on the day closest to your wedding, based on availability.
- There are no restrictions to the length of your event run time, we just need a general itinerary from your planner 2 weeks before your event date.

What's Included:

- Tables and chairs are set up by the start of your day. Tables are included in common shapes & sizes to accommodate your custom floor plan for up to 350 guests.
- 350 gold chiavari chairs with ivory tie-on pads. Chairs must be rented for outdoor ceremonies on the grass.
- On-site paved parking with enough spaces for up to 200-250 guests. Above 250 guests, valet services are required and can utilize the supplemental pine chip lot on the back acreage.
- Four custom, rolling bar fronts that can go indoors or out to serve cocktail hour and reception.
- Ceremony, cocktail, and reception spaces.
- Staff are onsite all day, ensuring the beauty and operationality of the venue - we are even there to greet and direct guests throughout the evening.
- A variety of furniture and smaller décor items that can be utilized for your wedding day, from a large wood table that can serve as a cake or sweetheart table to table numbers, easels, and a card box.
- An off-duty police officer for security.

Unique Features

- Food trucks or unique bar service vehicles can pull right up to event areas.
- Paths around gardens and the lake were built wide enough for horse and carriage access.
- Fireworks are allowed with appropriate permitting.
- Pets and animals are permitted on site, provided they remain outside and are accompanied by an attendant.
- Have a unique idea such as hot air balloon rides or a Ferris Wheel? Let's try it! We will work with you to ensure that all safety measures are followed and you get your WOW! moment.

SPACES DESIGNED TO WOW

Indoor-Outdoor Experience

Every corner of Hazelnut Farm is intentionally designed to elevate your celebration, from the elegant entryway to the stunning sunset views on the porch.

Your guests are welcomed by an impressive two-story foyer, then move effortlessly between the ballroom, covered porch, and 40 acres of gardens and water features. During cocktail hour, it's common to see guests relaxing by the koi pond, wandering the garden paths, or watching the sky shift colors from the lakefront porch.

With full access to the property, you and your photographer can capture portraits on the island bridge, beneath the hydrangea alley, or near our historic smokehouse.

What's Included:

- Elegant ballroom with brick, pine ceilings, and crystal chandeliers
- Grand foyer for dynamic entrances and displays
- Covered porch with heaters, fans, and French doors
- Indoor/outdoor ceremony, cocktail, and reception spaces
- Photo-ready dressing suites
- Climate-controlled + ADA-accessible for comfort in all seasons

Whether your vision is black-tie, boots-and-bouquets, or something all your own – this is where it comes to life.



WHERE
Barn
MEETS
Ballroom



CATERING & BAR POLICIES

At Hazelnut Farm, we believe great food and drink should be effortless for you and unforgettable for your guests. That's why we work exclusively with licensed, full-service professionals who are familiar with our venue, helping your event run smoothly.

Here's What To Know

- A full-service caterer from our approved list is required
- The same caterer is strongly encouraged to provide both food and bar service for consistency
- You may mix catering and bartending vendors with prior approval
- All alcohol must be purchased and served by a vendor with an ABC-issued license
- Self-serve alcohol and BYOB are strictly prohibited (including in dressing suites during the event)
- Last call is 11:30 pm or 30 minutes before your event's end time
- Bartenders are required to continue to serve non-alcoholic beverages and/or water until the conclusion of the event.
- If guests are seen self-serving alcohol, it will be confiscated, and they may be asked to leave

Facility Support & Fees

- A 15% facility fee applies to the final food and beverage invoice
- We provide ice, warming boxes, trash support, and venue access coordination
- Catering staff must stay on-site from start to finish and sign out with management before leaving
- Wedding cake, food-related favors, and late-night snacks may be dropped off with a signed responsibility affidavit by your planner and caterer.

Rentals

- Non-disposable flatware, glassware, and china are required (with limited exceptions for cocktail hour or late-night snacks)
- All food-related rentals must be picked up the night of the event
- Rentals left dirty or overnight may result in an additional fee

Special Requests & Cultural Cuisine

- We welcome ethnic or culturally specific catering partners with prior approval
- These vendors must tour the property and sign a usage agreement
- A fine may be applied if a non-approved vendor violates our catering policy

Looking for Something Creative

- Ice cream stands, food trucks, mobile bars, and specialty beverage carts are all welcome with prior approval – as long as insurance and safety requirements are met.

APPROVED VENDORS

All planning and catering/bartending vendors must be selected from the approved list below. These vendors carry the necessary insurance and permitting required by Hazelnut Farm, and up-to-date copies of each are on file.

Outside vendors to provide food that is culturally specific may be approved when partnered with one of the below vendors only, and at the discretion of Hazelnut Farm management. Please inquire as early as possible to begin this approval process.

All other vendors for services to fulfill floral design, serviceware and other design rentals, photography, videography, entertainment, beauty artists, and transportation companies may be used but must follow the applicable policies of Hazelnut Farm. A vendor policies packet will be given to you for each vendor to sign so they fully understand their expectations while working on property.

Approved Caterers

Bayou Bluegrass
Brasserie Provence
City BBQ
Crushed Ice Catering
Dupree Catering
The Exchange Pub & Kitchen*
Gustavo's Mexican Grill
Kingsley Meats & Catering
Ladyfingers Catering, Inc
Marigold Catering Co. (bar only through 2025)
Mayan Café
Morris Deli
MozzaPi*
Ramiro's Cantina
Rosemary's Catering
Seviche
Stumler's Catering*
Sweet Lilu's
Tandoori Fusion*
Volare
Wiltshire Pantry

Approved & Preferred Planners or Coordinators

Amber B Event Planner
Big Day Events
Christina Burton Events
Courtney Samuel Events
Engagements, LLC
Events on Pointe
Essential Details
Ginna Matson Events
Heleringer Events
Jill Searce Events
L&M Detailed Events Ltd. Co
Olivia Elise Events
ShaFox Weddings & Events
Shelly Fortune Events
Weekend Wedding Warrior

**Not approved for alcohol service with required ABC-issued liquor license.
Pair with an approved bar service to meet requirements*

*"Our guests kept asking how we found this hidden gem. It felt peaceful,
magical, and completely ours for the day."*

— Rachel & Ben

GUESTS CREATE A UNIQUE MEMORY TAKEAWAY



Hazelnut Farm has had a "phone booth" with a vintage phone in our foyer since opening day. However, in the past this has simply been a photo op location or even just a secret nook to sneak away and sit for a moment.

We have now added a unique guest experience that will leave you with a one of a kind "guest book." Your guests can actually pick up and dial the phone to a number where they can leave you a voicemail message - a toast to your love, a favorite memory from the wedding day, or their personal wedding advice for many happy years.

We will send you MP3 files of the voicemail recordings after the wedding day so you will always have them to cherish or listen back to for years to come.

COMPLIMENTARY PERKS

Tables & Chairs

- 300-350 Gold Chiavari Chairs with Ivory Tie-On Pads (for use inside venue or on paved patio outside only)
- 40 – 60in Round Tables
- 30 – 8ft Banquet Tables
- 10 – 6ft Banquet Tables
- 10 – 72in Round Tables
- 14 – 30in Adjustable High Top or Low Bistro Tables
- 8 – Bourbon Barrels
- 6 – 5ft Square Tables
- 4 – 48in Round Tables

Catering Kitchen

- Warming Boxes
- Two-Door Commercial-Grade Refrigerator
- 3 Bay Sink
- Trash Cans with Liners
- On-Site Dumpster
- 30lbs Bags of Ice in On-Site Freezer
- Upright Freezer for Frozen Food Items
- Carts/Dollies
- 6 – Standing Height Stainless Steel Prep Tables
- 4 – Custom Rolling Bar Fronts



Stephanie Hardwich Photography



Photos By Kaela Jean



Photos By Kaela Jean

Event Extras*

- 2 – Wrought Iron Standing Floor Easels
- Distressed Wood Terrarium Card Box
- 30 – Gold Wood Hexagon Table Numbers
- Gold Metal Hexagon Arbor
- Tabletop Easels & Frames in Various Sizes
- 3 – Standing Outdoor Fans for Additional Airflow on the Porch
- 3 – Standing Silver Dome Top Heaters
- 2 – Firepits (All Propane Provided)
- 4 – Large, Ivory, Self-Standing Patio Umbrellas

*Please check with the property manager the week of your event to ensure that the item you requested is available.

InHouse Rentals

Convenient options available right on-site – no delivery or setup fees required.

Looking to simplify your planning or add a little extra flair to your celebration? These items are available directly through Hazelnut Farm and can be added to your rental package with ease:

- Décor & Atmosphere
 - Black and white dance floor (4' x 4' panels, up to 20' x 20' max) – \$60 per panel
- Culinary Enhancements
 - Convection ovens (2 available) – \$350 each
 - Tandoori ovens (2 available) – \$350 each
 - 80 lb. fryer – \$100

No outside rental coordination needed. We'll have everything ready for your vendors when they arrive.

Porchia Nicole Photography



Linens

Simplify your planning with linens coordinated directly through Hazelnut Farm.

While we don't keep linens in-house, we offer a full-service linen rental experience through our trusted supplier – handled directly by our team, with transparent pricing and zero guesswork.

How It Works:

- After your custom floor plan is finalized, we'll provide a quote based on affordable solid poly linens (available in a wide range of colors)
- You're welcome to schedule a time to browse our swatch books and select materials that match your vision
- Once confirmed, we'll check availability and reserve quantities with the supplier
- Final selections, sizes, and payment are due two weeks before your event

What's Included:

- Linens arrive flat-pressed and shipped directly to the venue
- Our staff will place linens on tables – and even help fold napkins
- After the event, we'll return everything on your behalf via the supplier's preferred shipping method

Transparent Pricing:

- You pay the supplier's rental fee
- We apply a 15% service fee for handling and coordination
- Shipping costs are passed through exactly as charged by the supplier

Become a Part of
the Family!



FREQUENTLY ASKED QUESTIONS

Your most important questions, answered – so you can focus on celebrating.

Venue Access & Logistics

- What time can we arrive?

You can access the venue starting at 8:00 am for dressing suite use or vendor setup. The space is exclusively yours all day.

- When does the event have to end?

Events must end by midnight, with music off no later than 11:30 pm. Vendors may pack up afterward.

- Do we get a rehearsal?

Yes! A one-hour rehearsal is included, scheduled based on availability (typically the closest weekday to your event).

- Is there on-site parking?

Yes – paved parking for up to 250 guests. For larger events, valet is required and a secondary lot is available.

Catering & Bar

- Can we bring our own alcohol?

No. Alcohol must be purchased and served by a licensed vendor. No self-service or BYOB is permitted.

- Can we bring in a food truck or ice cream stand?

Yes – with advance approval and insurance documentation. A 15% facility fee applies to all food and beverage services.

- What about fast food, late-night snacks, or our wedding cake?

Yes! These drop-offs are allowed without a facility fee – just coordinate with your planner and caterer in advance.

- Do you allow outside caterers?

Only with prior approval. We welcome cultural cuisine and new partners but require a site visit and signed agreement.

Property & Experience

- Is the venue accessible for all guests?

Yes – the entire venue is ADA-compliant, including restrooms and paved pathways throughout the grounds.

- Can we bring pets?

Yes – as long as animals remain outdoors and have a designated handler throughout the event.

- Can we use the outdoor spaces for all parts of the day?

Absolutely. Many couples host ceremony, cocktail hour, and dancing across the porch, lawn, and island – weather permitting.

- Do the lights dim?

Yes. All lighting in the ballroom and adjacent spaces is independently dimmable for dinner and dancing.

Fun Extras

- Are fireworks or sparklers allowed?

Yes – with proper permitting and advance notice. We're happy to help coordinate safe, exciting send-offs.

- Can we host a horse & carriage ride or something more unique?

Yes! Our grounds can accommodate everything from carriages to hot air balloons – let's talk about your vision.



The Farmhouse

Extend your celebration with a quiet, luxurious stay just steps from the venue.

Imagine waking up on your wedding day with a cup of coffee, watching the sun rise over the lake, or winding down the night surrounded by family and friends in a beautiful, private space that feels like home.

Our fully renovated Farmhouse offers a comfortable, stylish place to stay right on the property. Whether you use it for getting ready or spending the weekend with loved ones, the Farmhouse adds a layer of ease to your entire celebration.

What's Included:

- Sleeps up to 11 guests comfortably
- Spacious kitchen with oversized marble island and serving pieces for up to 30
- Refillable bath amenities, luxury towels, and thoughtful touches throughout
- Reserved private access — no other weddings booked on your weekend

Rental Rates:

- January–April & November–December: \$5,750/night
- May–October: \$6,250/night

2-night minimum for weekends. Single-night rentals may incur an additional fee for late checkout.



HAZELNUT
Farm

816 Eastwood Fisherville Road | Louisville, Kentucky 40023 | 502.751.6079

DIRECTIONS

Downtown

Coming I-64 Eastbound

Take I-64 East toward Lexington.
Take Exit 19B to the Gene Snyder Freeway I-265.
Take Exit 27 to Eastwood, keep right.
Take a slight right at the fork onto Eastwood Cutoff Road.
Turn right onto Eastwood Fisherville Road.
In .7 miles Hazelnut Farm will be on the right.

Cincinnati Louisville

Coming I-71 Southbound or Northbound

Take I-71 going North or South
Merge onto the Gene Snyder Freeway I-265W via Exit 9A
(southbound first follows signs for 9B then remains left to
follow exit 9A)
Take Exit 27 toward Eastwood/Middletown, keep left.
Turn left onto Shelbyville Road-US 60.
In 2.75 miles take a slight right at the fork onto Eastwood
Cutoff Road.
Take a right onto Eastwood Fisherville Road.
In .7 miles Hazelnut Farm will be on the right.

Lexington

Coming I-64 Westbound

Take I-64 going West toward Louisville.
In 25 miles, take Exit 28 toward Simpsonville.
Turn slight right onto Buck Creek Road.
Turn left onto Shelbyville Road-US 60.
Continue for 6 miles.
Take a slight left onto Eastwood Cutoff Road.
Take a left onto Eastwood Fisherville Road.
In .7 miles Hazelnut Farm will be on your right

Once on Property

After you have gone through the gate, take an immediate right, following signs for
"Office & Parking"

At the top of the hill, take a left and travel the length of the parking lot.

The entrance to the venue is down the stairs and through the teal doors.